

Why DOS Was (and Is) a *Thing*

Jim Hall

The FreeDOS Project





image: Wikipedia

UNIX

A History and a Memoir

Brian Kernighan





images: Wikipedia





image: Wikipedia



CP/M-86 for the IBM Personal Computer.
Version 1.0
Copyright 1982, Digital Research Inc.

Hardware Supported :

Diskette(s) : 1
Printer(s) : 1
Serial Port(s) : 1
Memory (Kb) : 127

A>dir

A: ASMB6	CMD : TOD	CMD : COPYDISK	CMD : DDT86	CMD
A: ASSIGN	CMD : NEWDISK	CMD : FUNCTION	CMD : PROTOCOL	CMD
A: ED	CMD : SPEED	CMD : PIP	CMD : SUBMIT	CMD
A: HELP	CMD : HELP	HLP : STAT	CMD : GENCMD	CMD

A>stat

A: RW, Free Space: 11k

A>tod

02/10/82 00:00:09

A>_

|U=00|02/10/82|00:00:12|



COMM BAS 4352 08-04-81

A>cls

Bad command or file name

A>dir *.com

COMMAND	COM	3231	08-04-81
FORMAT	COM	2560	08-04-81
CHKDSK	COM	1395	08-04-81
SYS	COM	896	08-04-81
DISKCOPY	COM	1216	08-04-81
DISKCOMP	COM	1124	08-04-81
COMP	COM	1620	08-04-81
DATE	COM	252	08-04-81
TIME	COM	250	08-04-81
MODE	COM	860	08-04-81
EDLIN	COM	2392	08-04-81
DEBUG	COM	6049	08-04-81
BASIC	COM	10880	08-04-81
BASICA	COM	16256	08-04-81

A>dir *.exe

LINK	EXE	43264	08-04-81
------	-----	-------	----------

A>_



DOS commands (1.x)

COMMAND
BASIC/BASICA

DATE
TIME

FORMAT
SYS
CHKDSK
DISKCOMP
DISKCOPY

MODE

DIR

COMP
COPY
ERASE
RENAME
TYPE

PAUSE
REM

EDLIN
DEBUG
EXE2BIN (PC DOS 1.1)



DOS commands (2.x)

ASSIGN
BACKUP/RESTORE
RECOVER

BREAK
CTTY
GRAPHICS
PRINT

FDISK
VERIFY
VOL

FIND
MORE
SORT
FC (MS-DOS 2.01)

CD
MD/MKDIR
RD/RMDIR
PATH
TREE

CLS
PROMPT
VER

ECHO
EXIT
FOR
GOTO
IF
SET
SHIFT



DOS commands (3.x)

ATTRIB

GRAFTABL

KEYBxx / KEYB

LABEL

SHARE

JOIN (DOS 3.1)

SUBST (DOS 3.1)

APPEND (MS-DOS 3.2)

REPLACE (MS-DOS 3.2)

XCOPY (MS-DOS 3.2)

CALL (DOS 3.3)

CHCP (DOS 3.3)

FASTOPEN (DOS 3.3)

NLSFUNC (DOS 3.3)



DOS commands (4.x)

MEM

TRUENAME



DOS commands (5.x)

DOSKEY

EDLIN → EDIT

BASIC → QBASIC

HELP

MOUSE (DOS 5.02)

MIRROR

UNDELETE

UNFORMAT

EMM386

LOADFIX

LH/LOADHIGH

SETVER

POWER (DOS 5.02)

INTERSVR/INTERLNK (DOS 5.02)



C:\



Directory Tree



C:*.*

	AUTOEXEC.BAT	71	08-15-20	
	COMMAND.COM	47,845	04-09-91	
	CONFIG.SYS	71	08-15-20	
	WINA20.386	9,349	04-09-91	

Main

- Command Prompt
- Editor
- MS-DOS QBasic
- Disk Utilities



DOS commands (6.x)

CHOICE

MOVE

MSD

DEFRAG

DELTREE

MSCDEX

SMARTDRV

SCANDISK (MS-DOS 6.2)



	A	B	C	D	E	F	G	H
1	MIS 100							
2								
3	Skills:	poss:	pts:		Exams:	poss:	pts:	
4	1	5	4.1		1	10	8.8	
5	2	5	4.5		2	10	9.1	
6	3	5	4.8		3	10	8.2	
7	4	5	4.1		4	10	8.4	
8	5	5	4.2		5	10	8.5	
9	6	5	4.2		6	10	8.6	
10	7	5	4.3		7	10	8.2	
11	8	5	4.314286 *		8	10	8.542857 *	
12	9	5	4.344898 *		9	10	8.506122 *	
13	10	5	4.322741 *		10	10	8.421283 *	
14	11	5	4.254561 *		11	10	8.452895 *	
15								
16	Resume	100	91					
17	Sprdsht	100	89					
18	Art Revw	100	90 *					
19								
20		465	411.1596	88.42143%				
21								



Worksheet Range Copy Move File Print Graph Data System Quit
 Global, Insert, Delete, Column, Erase, Titles, Window, Status, Page

J	K	L	M	N
1	Variable Costs/Unit		Fixed Costs	
2	Description	Cost/Unit	Description	
3	=====		=====	
4	Materials	\$3.26	Plant Operation	
5	Contract Labor	\$3.75	Salaries	
6	Energy	\$1.45	Administration	
7	Sales Commissions	\$2.21	Sales & Marketing	
8	Freight	\$0.32	Research & Development	
9		-----		
10	Total	\$10.99		



A1 [W15]: ' Bond Calculation External Functions.

[A]A|B|C|D|E|F| G

```

1 Bond Calculation External Functions.
2 Definitions and Variable Descriptions are included
3 in the Sample External Function Definition File.
4 ** Copyright 1995, TRIUS, Inc. **
5 -----
6
7 0.0746015 <-- @BDISC(96.2492,100,360,11,24,95,5,27,95)
8
9 0.0732765 <-- @BINTR(10397.5,10000,365,5,27,96,11,11,95)
10
11 1,033,899.79 <-- @BRCV(1000000,0.07922,360,6,15,95,1,17,95)
12
13 94.642944444 <-- @BPRICE(100,0.0914,360,8,1,1996,1,3,1996)
14
15 0.088023473 <-- @BYIELD(97.8,100,360,10,15,1993,7,15,1993)
16 -----
(1 ) EXT2BOND.WKS

```

```

12
13 94.642944444 <-- @BPRICE(100,0.0914,360,8,1,1996,1,3,1996)
14
(2 ) EXT2BOND.WKS

```

F1:? F2:Edit F3:Macro F4:Abs F5:Goto F6:Wind F7:View F9:Calc F10:Graph

U57 Free: 99%[254k] AutoN READY! 9:54:11 pm



IN CONGRESS, JULY 4, 1776

The unanimous Declaration of the thirteen united States of
America

When in the Course of human events it becomes necessary for one
people to dissolve the political bands which have connected them
with another and to assume among the powers of the earth, the
separate and equal station to which the Laws of Nature and of
Nature's God entitle them, a decent respect to the opinions of
mankind requires that they should declare the causes which impel
them to the separation.

We hold these truths to be self-evident, that all men are created
equal, that they are endowed by their Creator with certain
unalienable Rights, that among these are Life, Liberty and the
pursuit of Happiness. - That to secure these rights, Governments
are instituted among Men, deriving their just powers from the
consent of the governed, - That whenever any Form of Government
becomes destructive of these ends, it is the Right of the People
to alter or to abolish it, and to institute new Government,
laying its foundation on such principles and organizing its
powers in such form, as to them shall seem most likely to effect






id
SOFTWARE

PROVIDED BY id FREE OF CHARGE • SUGGESTED RETAIL PRICE \$9.00 • id SOFTWARE, © 1993





PROVIDED BY  FREE OF CHARGE • SUGGEST

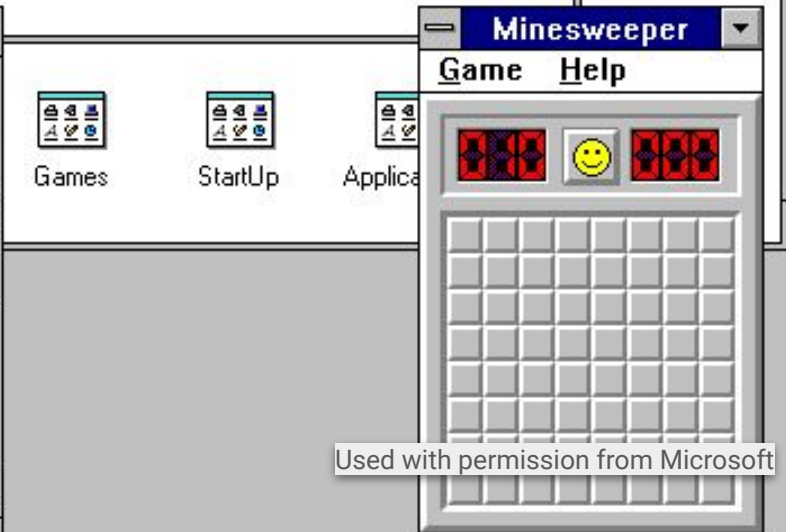
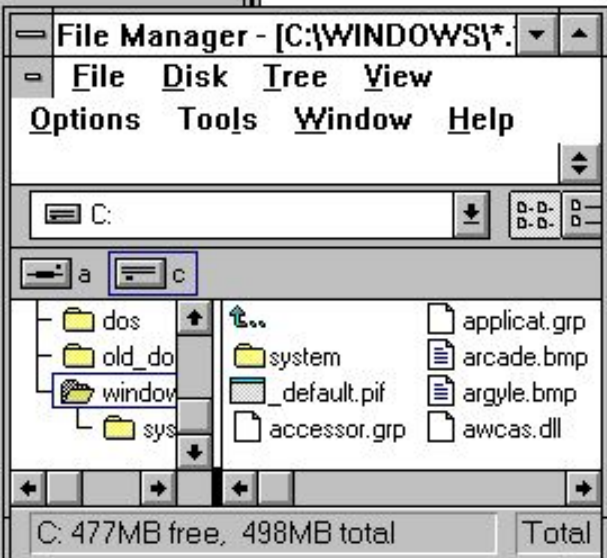
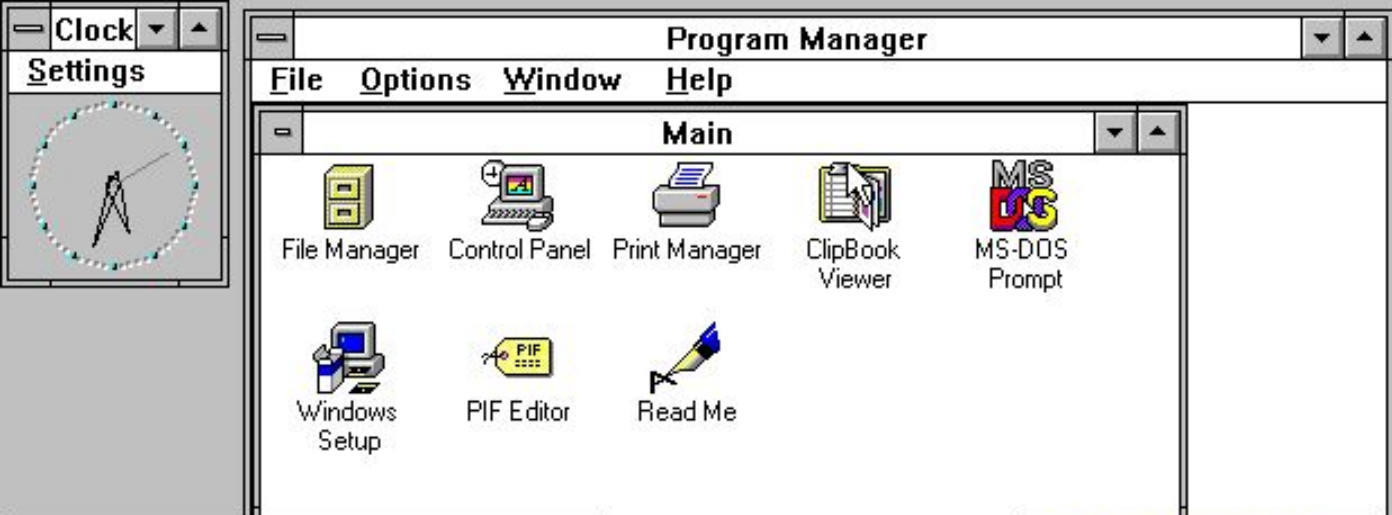


1984



image: Wikipedia





Used with permission from Microsoft



“New Windows!”

“DOS is dead”

The whole design ethos behind Chicago was summed up by Brad Silverberg, the vice president of the Personal Operating Systems Division and team leader. “Let’s



us in Redmond,
the sign.

face it, PCs aren’t that easy to use,” he rather wisely observed. “So our aim is to make PCs easier for everyone, not just technically-minded people.” There are 40-60 million Windows users worldwide, and the idea is to provide Chicago as a ‘no-brainer’ upgrade:

you install it over Windows 3.1, you take a day learning the interface, and from then on in it’s plain sailing no matter which applications or hardware you install.

Chicago replaces DOS completely.

Gone are memory managers, config.sys, autoexec.bat and boot disks. When you turn on the PC, Chicago appears; when you want to turn off, you shut it down, just like a Macintosh. It’s fully 32-bit with pre-

PC Format (#34, July 1994)



Date: 29 Jun 94 00:24:11 -0600

Keywords: public domain DOS

Summary: I'd like to start a PD-DOS project if one not already exists

ANNOUNCEMENT OF PD-DOS PROJECT:

A few months ago, I posted articles relating to starting a public domain version of DOS. The general support for this at the time was strong, and many people agreed with the statement, "start writing!" So, I have...

Announcing the first effort to produce a PD-DOS. I have written up a "manifest" describing the goals of such a project and an outline of the work, as well as a "task list" that shows exactly what needs to be written. I'll post those here, and let discussion follow.

[...]

I am excited about PD-DOS, and I am hoping I can get a group started!

--James Hall

James.F.Hall@uwrf.edu



1994 - 2006

Free-DOS Alpha 1 (16 September 1994)

Free-DOS Alpha 2 (December 1994)

Free-DOS Alpha 3 (January 1995)

Free-DOS Alpha 4 (June 1995)

FreeDOS Alpha 5 (10 August 1996)

FreeDOS Alpha 6 (November 1997)

FreeDOS Beta 1 "Orlando" (25 March 1998)

FreeDOS Beta 2 "Marvin" (28 October 1998)

FreeDOS Beta 3 "Ventura" (21 April 1999)

FreeDOS Beta 4 "Lemur" (9 April 2000)

FreeDOS Beta 5 "Lara" (10 August 2000)

FreeDOS Beta 6 "Midnite" (18 March 2001)

FreeDOS Beta 7 "Spears" (7 September 2001)

FreeDOS Beta 8 "Methusalem" (7 April 2002)

FreeDOS Beta 9 RC1 (July 2003)

FreeDOS Beta 9 RC2 (23 August 2003)

FreeDOS Beta 9 RC3 (27 September 2003)

FreeDOS Beta 9 RC4 (5 February 2004)

FreeDOS Beta 9 RC5 (20 March 2004)

FreeDOS Beta 9 (28 September 2004)

FreeDOS Beta 9 SR1 (30 November 2004)

FreeDOS Beta 9 SR2 (30 November 2005)

FreeDOS 1.0 (3 September 2006)



2006 - 2016

FreeDOS 1.0 (3 September 2006)

FreeDOS 1.1 (2 January 2012)

FreeDOS 1.2 RC1 (31 October 2016)

FreeDOS 1.2 RC2 (24 November 2016)

FreeDOS 1.2 (25 December 2016)



Installed at PS/2 port

Modules using memory below 1 MB:

Name	Total		Conventional		Upper Memory	
-----	-----	-----	-----	-----	-----	-----
SYSTEM	16,784	(16K)	10,480	(10K)	6,304	(6K)
COMMAND	4,064	(4K)	0	(0K)	4,064	(4K)
UDUD2	2,000	(2K)	0	(0K)	2,000	(2K)
FDAPM	928	(1K)	0	(0K)	928	(1K)
CTMOUSE	3,104	(3K)	0	(0K)	3,104	(3K)
SHSUCDX	11,008	(11K)	0	(0K)	11,008	(11K)
Free	722,144	(705K)	643,552	(628K)	78,592	(77K)

Drives Assigned

Drive Driver Unit
D: FDCD0001 0
2 drive(s) available.

Done processing startup files C:\FDCONFIG.SYS and C:\AUTOEXEC.BAT

Type HELP to get support on commands and navigation.

Welcome to the FreeDOS 1.2 operating system (<http://www.freedos.org>)

C:\>_



FreeDOS 1.3

What is “DOS”?

- 16-bit
- single-tasking
- single-user
- command-line
- run on old hardware

What is a “modern DOS”?

- tools
- utilities

Compatibility is key!



More information

www.freedos.org

youtube.com/freedosproject

Jim Hall

jhall@freedos.org

